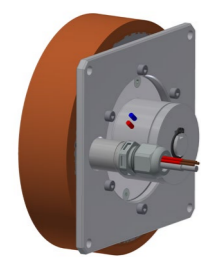
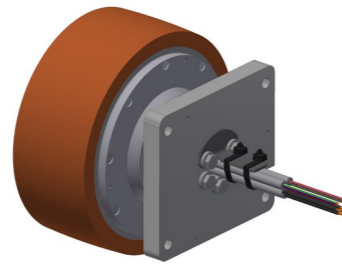


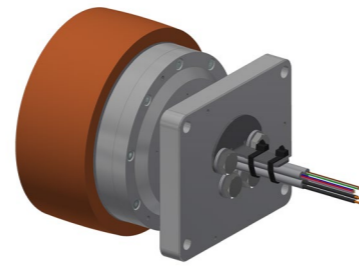
Wheel hub motors i-Wheel 3213



3213.00-1XXX



3213.00-2XXX



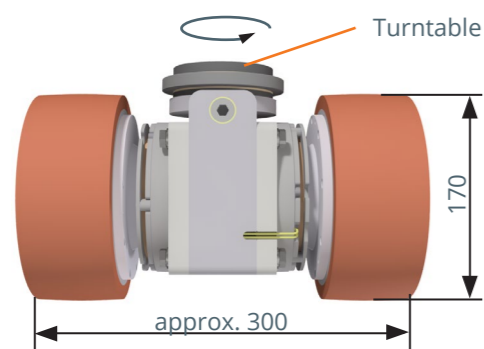
3213.00-3XXX

An optimal drive solution for every transport task

The Ketterer i-Wheel 3213 wheel hub drives have been specially developed for use in Automated Guided Vehicles (AGV). They are designed as direct drives that are completely integrated in the hub and therefore need neither an additional gearbox nor an extra wheel.

An extremely flat design combined with a high power density allows an application with very tight installation spaces. The compact all-in-one solution not only impresses due to its benefits in terms of space requirements but also thanks to the fact it is maintenance-free and has a service life many times longer than systems equipped with a gearbox.

The i-Wheel 3213 series consists of three high-performance wheel hub drives, which can reach torques up to 34 Nm and speeds up to 27 km/h.



The ultra-compact design enables a simple arrangement of two drives on one rotary disk. This means that maneuvering the vehicle with a zero turning radius is no longer a challenge.

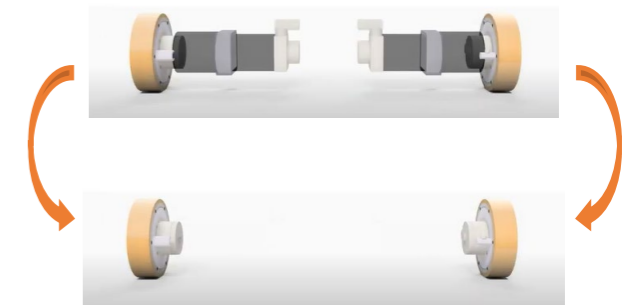
In terms of its efficiency and individual scalability, the family of drives offers an optimal modular solution for electric transportation vehicles.

We would be pleased to develop a solution for you that is specially tailored to your drive task!

Motor layout, flange geometry, the type of brake and the encoder can be implemented in line with your requirements.

Our technology - Your benefit

- Neither a gearbox nor an extra wheel is needed
- Ultra-compact for tight installation spaces
- High power density in the smallest installation space
- Much longer service life compared to conventional drive technology with a gear stage
- No gear – no wear
- Easy to replace the wheel coating
- Very good running properties with minimal noise level



Safety first

- Safety architecture of the rotational control system using diverse redundancy, or two-channel design
- In combination with a suitable controller, a safety level of **PL-d** in accordance with EN ISO 13849-1 can be achieved
- Safe production processes, as there are no risks of contamination from gear oils and greases (no gearbox)

Flexibility and customer orientation are our strengths:

The choice is yours - we implement it!

- Flexible voltage range from 24 V to 48 V
- Encoder: BiSS, SSI, TTL incremental in different resolutions
- Brake: Permanent magnetic brake or spring-operated brake with low energy consumption
- Can be combined with various controllers
- Adaptations for mechanical integration and system connection

i-Wheel 3213 family: Torque & achievable speeds & 48 V DC

