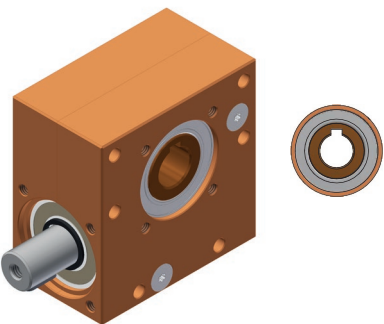


Low-backlash gear Ket-Motion 2020 PS

with feather key groove



A low-backlash, maintenance-free worm gear unit for demanding applications in positioning or for high-precision measuring tasks. The housing is encapsulated to prevent the escape of grease and the ingress of dust. The direction of rotation on the shaft is arbitrary.

Special features

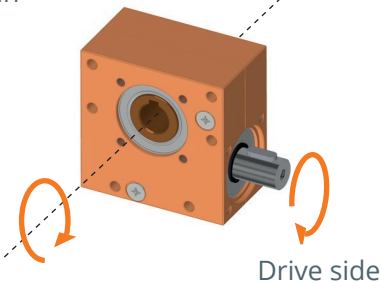
- Maintenance-free grease lubrication
- Housing: Aluminium anodized (Zinc housing on customer request)
- Reduction ratios of 65:1 in standard (Other reduction ratios also possible on request)
- Backlash: $\leq 0.05^\circ$ (3') to $M_{Drive} = 0.1 \text{ Nm}$
 $\leq 0.5^\circ$ (30') to $M_{Drive} = 1 \text{ Nm}$
- Duty cycle of 10 % at 5 min (0.5 min ON, 4.5 min OFF)
- Service life of 1,000 hours with:
 - full load and
 - input speed of 100 rpm and
 - duty cycle 10% with 5 min and
 - ambient temperature 20 °C



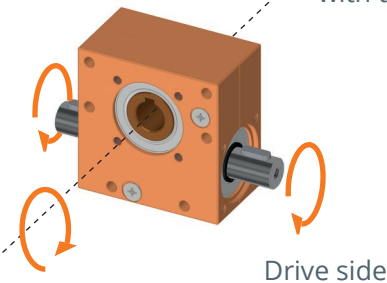
Variant key

Ket-Motion 2020.00	Configuration of drive side				
	S	With one drive pin			
	D	With through going axis			
	Housing: Material & Optics				
	0	Alu, orange anodized (standard)			
	1	Alu, silver anodized			
	X _i	Alu, Color according to customer requirements			
	Z	Zinc die-cast housing (on request)			
	Configuration of output side				
	P	Feather key			
Reduction ratio					
		S65	i = 65:1 other reduction variants on request		
2020.00-	S	0	P	S65	Example

Variant 2020.00-S0PS65
with one drive pin



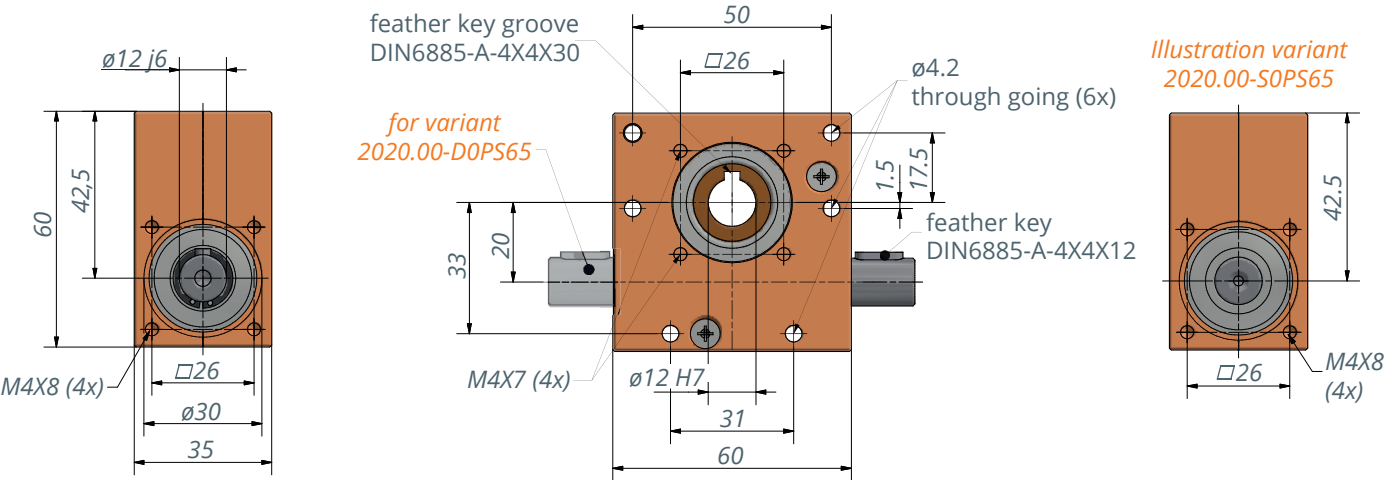
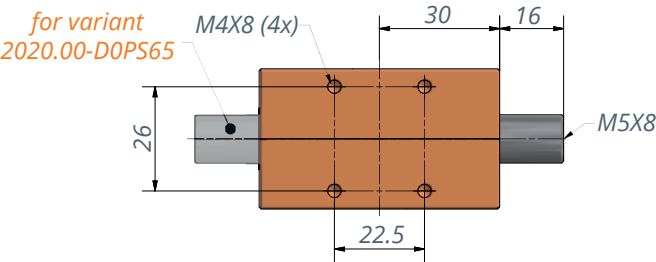
Variant 2020.00-D0PS65
with through going axis



Technical data

Item number	Reduction ratio i	Self-locking static	Max. output speed n in min ⁻¹	Max. output torque M in Nm	Max. drive torque M in Ncm	Max. axial load on drive side in N	Degree of efficiency in %
2020.00-S0PS65	65 : 1	Yes	500	3.8	0.2	500	29
2020.00-D0PS65							

Other translations on request



Technical notes

- The positions of the feather keys as standard in variant D are not in line. Possible on enquiry if needed